



Build data-centric applications on the leading Web3 Data Platform

Fluree is a blockchain-backed data platform built to power next-generation applications, interoperable data sources, and data-driven ecosystems.



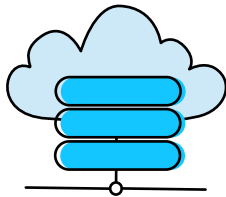
Immutability

Secure every update with blockchain cryptography in a core immutable ledger. Gain complete data traceability throughout history and a provable audit trail into provenance and path of data.



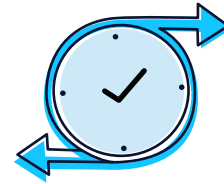
Powerful Graph Queries

Fluree organizes RDF-formatted data in a rich graph database, with native support for open source languages (GraphQL, SPARQL, and JSON-based FlureeQL) for rich, declarative insights.



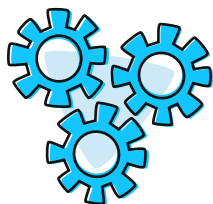
Real-Time Apps

Power applications in real time with a lightweight, embeddable Javascript library. Queries interface point-blank with an in-memory database and Fluree-React can dynamically render updates.



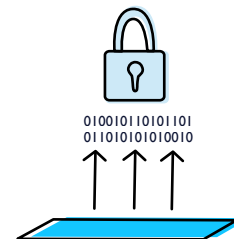
Time Travel

Optionally query against any point in time (both past and hypothetical future) to reproduce Fluree's state down to the millisecond. It's like git, but for all of your data.



W3C Standards

Fluree's semantic RDF triplestore format allows for F.A.I.R. data (Findable, Accessible, Interoperable, Reusable) for instant machine readability and native integration with other standards-based systems.



SmartFunctions

Embed permission logic directly at the data layer as executable co-resident data. Fluree SmartFunctions also provide data-centric identity and access management with one source of truth.

Why Fluree?

Your data is important. Fluree treats it that way.

Trust: A foundation of data integrity

Gain provable provenance and historic integrity via blockchain signatures, as well as data-centric security enforced directly at data layer. Fluree also provides traceability of changes as a native data audit trail.

Leverage: Powerful data-driven insights

Most databases are black boxes. Fluree allows you to unlock and leverage your data with rich graph query insights, declarative query languages and embeddable javascript query peers. Linearly scale your data as a CDN (content delivery network) to get the data to its consumers quickly, securely, and efficiently.

Share: Enable efficient data ecosystems

Fluree is the perfect toolkit for data-driven ecosystems and applications that interoperate across business functions, third-parties, and governance contexts. With blockchain cryptography, optional decentralization, and configurable rules written directly to the ledger, Fluree powers secure and efficient digital collaboration.

The Data Platform For All

Fewer headaches and better outcomes across the entire data value chain.



Development and Information Architecture

Familiar languages and flexible schemas. Rich, declarative graph insights across all data sources. By reducing the need for custom code and API bloat, Fluree harmonizes front and back end development under a single source of data truth.



Information Security

Codify permission logic as co-resident data. Data-centric security allows your apps to bypass bloated security layers and efficiently deliver trusted data. Save tens of thousands on API security management and harness the value of a single and scalable data security model.



Compliance

Output a native audit trail of every data change, ever. Hand mathematical proof of integrity directly to auditors, customers, and third parties.



Data Science

Fluree provides AI/ML and data integration technologies with higher-quality data (full historical context, immutable & tamper-proof) and a better way to access it (graph query for sophisticated analysis, multi-source query to broaden access and depth of knowledge.)